

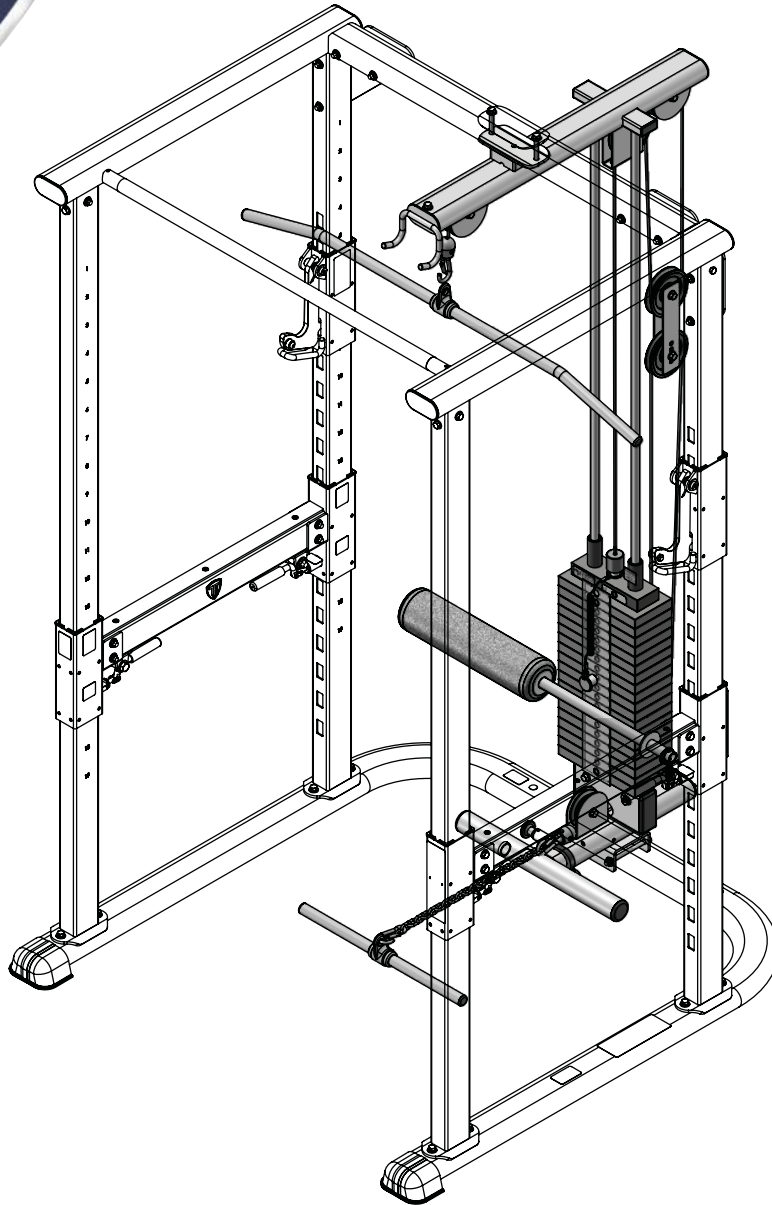


TUFFSTUFF FITNESS INTERNATIONAL

OWNER'S MANUAL

Maintenance & Assembly Instructions

IMPORTANT: KEEP THIS MANUAL FOR FUTURE REFERENCE



NOTICE

It is the Purchaser's/Owner's obligation:

1. To disclose and post all Rules & Regulations, Danger, Warning and Caution labels affixed on the machine to their customers/users.
2. Equipment to be installed by TFI Authorized Dealer or a service company approved by TFI.
3. Provide trained personnel, supervision and correct usage of the equipment.
4. Provide scheduled inspection, maintenance & repairs and must be performed by TFI Authorized Dealer or a service company approved by TFI.
5. Must use only genuine TFI replacement parts.
6. **▲ WARNING** Machine must be anchored to a solid and level surface.

CHL-305WS

High/Low Pulley w/200 Lbs. Weight Stack for CPR-265

CHL-305WS Rev0
Revision Date 9-2-2014

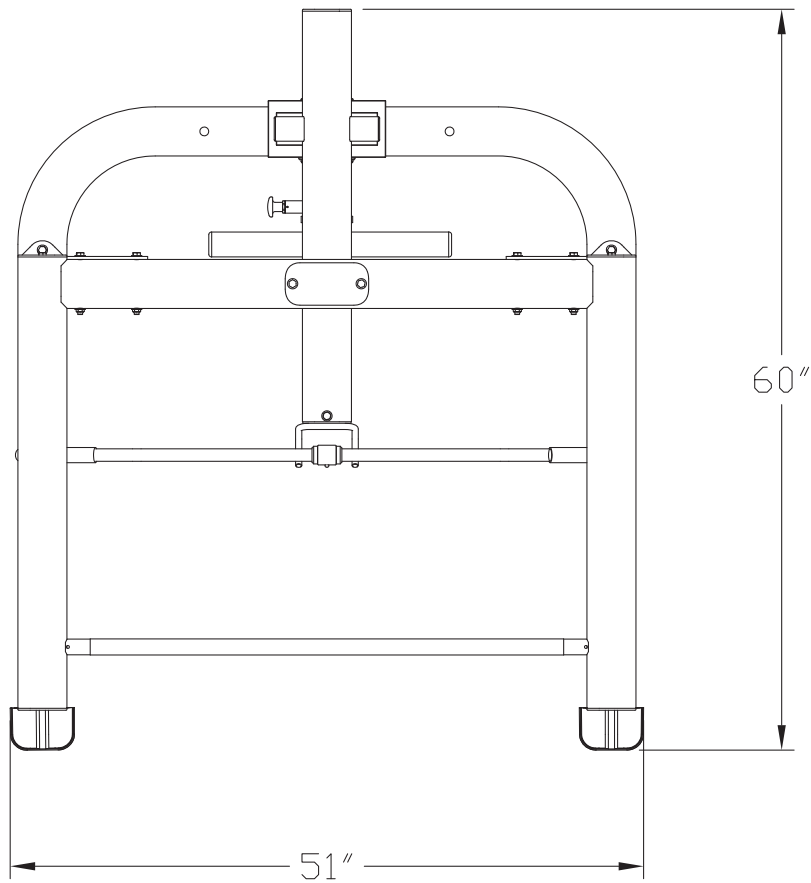
Table of Contents



Overhead Specifications.....	Page 3
Danger, Warning, & Caution Labels Information	Page 4-7
Anchoring Unit.....	Page 8
Important Safety Instructions.....	Page 9
Registration, Service & Assembly	Page 10
Inspection/Maintenance	Page 11
Cable Inspection.....	Page 12
Step 1	Page 13
Step 2.....	Page 14
Step 3.....	Page 15
Step 4.....	Page 16
Step 5.....	Page 17
Step 6.....	Page 18
Step 7 Cable Routing	Page 19
Step 8.....	Page 20
Parts List.....	Page 21
Pre-Assembled Components	Page 22-26
Notes.....	Page 27
Warranty	Page 28

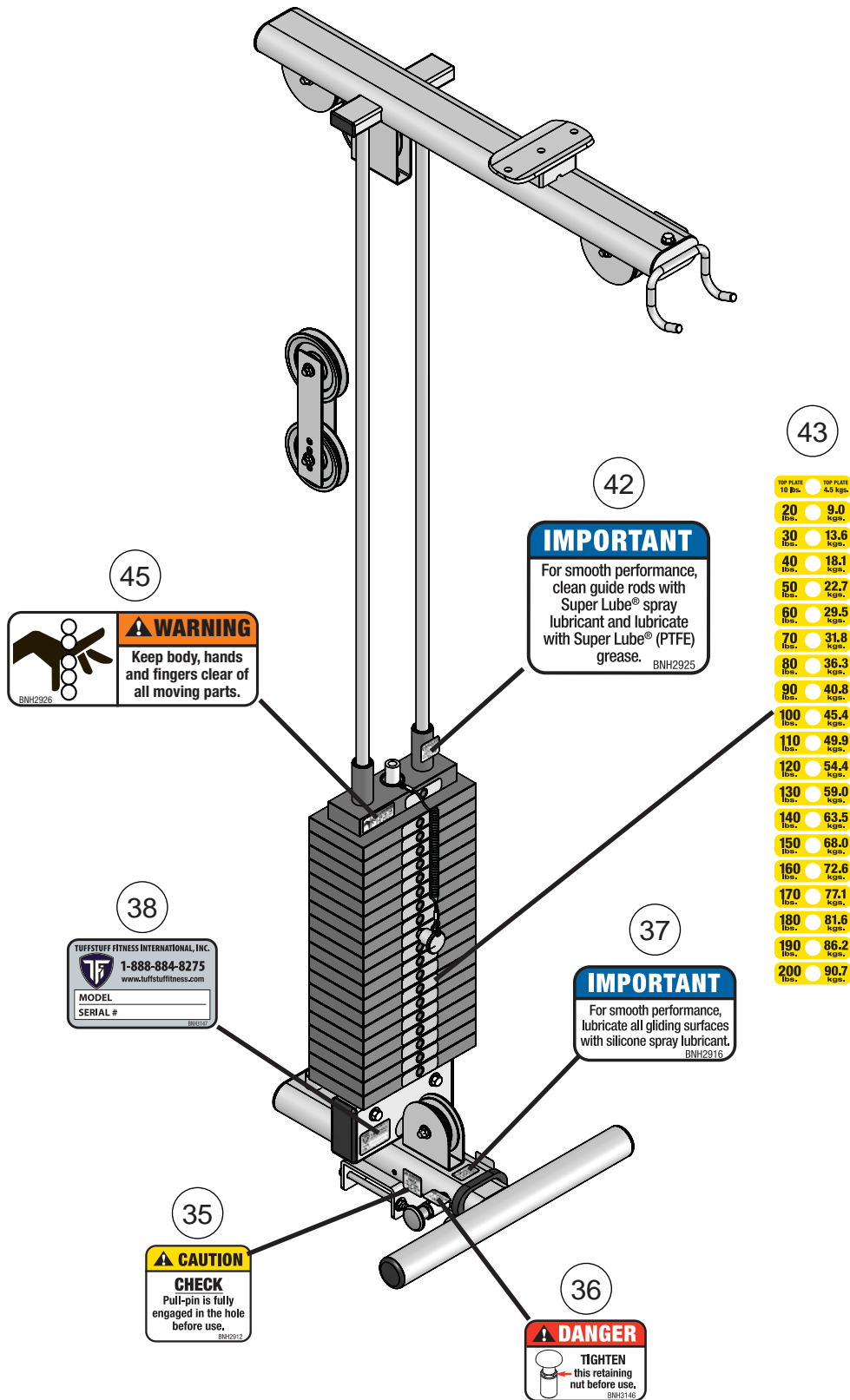
TuffStuff Fitness International Inc. continually engages in research related to product improvements. Please take the time to carefully read through this owner's manual thoroughly. Instructions contained in this owner's manual are not intended to cover all details or variations possible with equipment, or to cover every contingency that may be met in conjunction with assembly, installation, operation, maintenance or troubleshooting of the equipment. Even though we have prepared this owner's manual with extreme care, neither the manufacturer nor the author can accept responsibility for any errors in, or omission from, the information given. Should additional information be required, or should situations arise that are not covered by this owner's manual, the matter should be directed to Customer Service at TuffStuff Fitness International Inc. in Chino, California.

Overhead Specifications

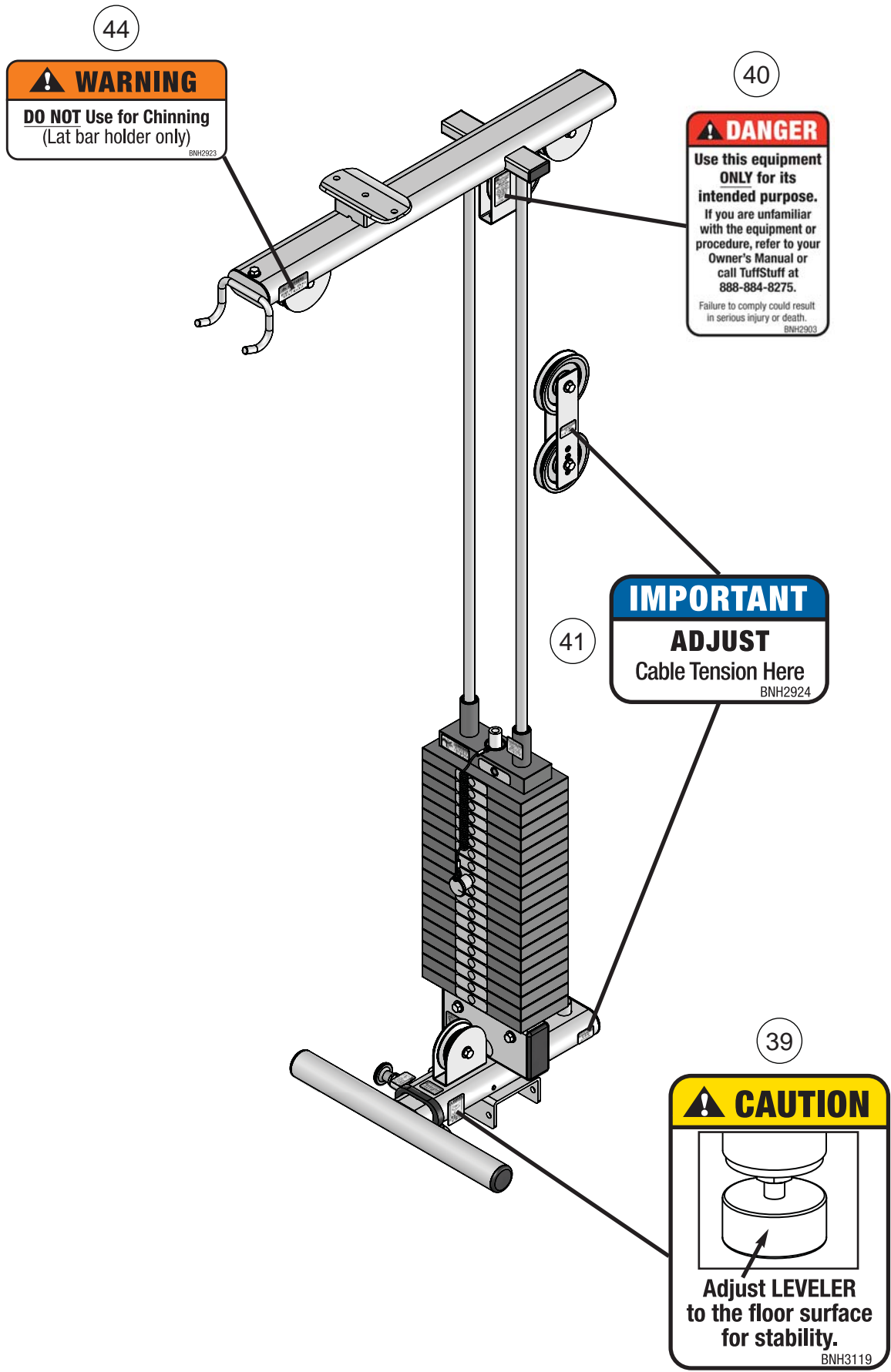


L 60" X W 51" X H 84"
PRODUCT WEIGHT 275 lbs
MAX-LOAD WEIGHT LIMIT - 200 lbs

Carefully read ALL Danger, Warning & Caution labels posted on the machine



Carefully read ALL Danger, Warning & Caution labels posted on the machine

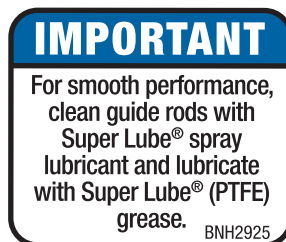


Carefully read ALL Danger, Warning & Caution labels posted on the machine

45



42



35



36



38



37



Carefully read ALL Danger, Warning & Caution labels posted on the machine

43

TOP PLATE 10 lbs.	TOP PLATE 4.5 kgs.
20 lbs.	9.0 kgs.
30 lbs.	13.6 kgs.
40 lbs.	18.1 kgs.
50 lbs.	22.7 kgs.
60 lbs.	29.5 kgs.
70 lbs.	31.8 kgs.
80 lbs.	36.3 kgs.
90 lbs.	40.8 kgs.
100 lbs.	45.4 kgs.
110 lbs.	49.9 kgs.
120 lbs.	54.4 kgs.
130 lbs.	59.0 kgs.
140 lbs.	63.5 kgs.
150 lbs.	68.0 kgs.
160 lbs.	72.6 kgs.
170 lbs.	77.1 kgs.
180 lbs.	81.6 kgs.
190 lbs.	86.2 kgs.
200 lbs.	90.7 kgs.

40

! DANGER

Use this equipment **ONLY** for its intended purpose.

If you are unfamiliar with the equipment or procedure, refer to your Owner's Manual or call TuffStuff at 888-884-8275.

Failure to comply could result in serious injury or death.

BNH2903

44

! WARNING

DO NOT Use for Chinning
(Lat bar holder only)

BNH2923

39

! CAUTION



Adjust **LEVELER** to the floor surface for stability.

BNH3119

41

IMPORTANT

ADJUST

Cable Tension Here

BNH2924

46

BE ALERT!

THE FITNESS EQUIPMENT IN THIS FACILITY PRESENTS HAZARDS WHICH, IF NOT AVOIDED, COULD CAUSE SERIOUS INJURY OR DEATH.

Prior to using the equipment, READ the warning labels and instruction placards affixed to each machine.

If you are unsure on how to use a machine, seek the assistance of our floor personnel. We will be happy to instruct you on how to use the equipment properly.

Immediately report any piece of equipment that is not functioning properly to our floor personnel so that it may be evaluated and service promptly.

DO NOT ATTEMPT to use or fix any piece of equipment that is not functioning properly.

ASTM F1749-06 TUFFSTUFF FITNESS INTERNATIONAL, CHINO, CA 91710
BNH3138

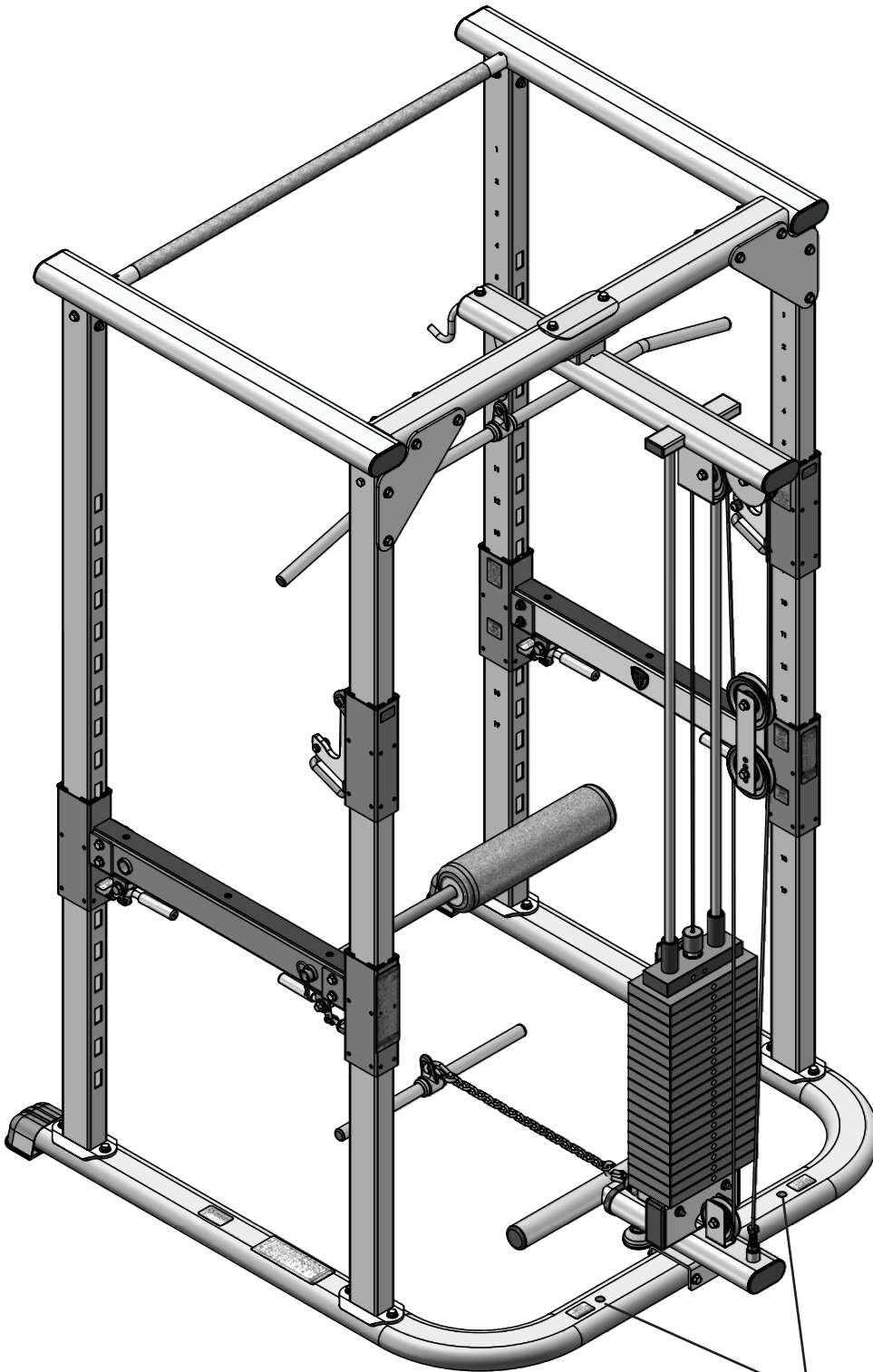
It is extremely important that the **Facility Sign** shown to the left be installed in plain view of the unit.

You should have received it along with this Owner's Manual. If you did not receive this Facility Sign with your order, you can obtain one at no cost to you from TuffStuff Fitness by contacting our service department at:

1 (888) 884-8275
service@tuffstuff.net
service1@tuffstuff.net

Anchoring Unit

THIS OPTIONAL ATTACHMENT MUST BE ASSEMBLED ONTO A FULLY ANCHORED CPR-265 UNIT.



ANCHORING HOLES

⚠ WARNING
Anchor bolt here to
fasten the machine
to the floor.

BNH3089

Important Safety Instructions



It is the responsibility of the facility owner and/or owner of the equipment to review the Owner's Manual with their facility personnel and understand all Danger, Warning and Caution labels affixed on the machine. It is the responsibility of the floor personnel to instruct users on proper operation of the equipment and review all danger, warning and caution labels.

⚠ WARNING SERIOUS INJURY OR DEATH CAN OCCUR IF THESE SAFETY PRECAUTIONS ARE NOT OBSERVED:

1. Obtain a medical exam before beginning any exercise program.
2. Read and understand Owner's Manual and all **Danger, Warning and Caution** labels before using this equipment. If you still need help, seek assistance from floor personnel.
3. **Inspect the equipment** before each use for wear and tear, loose fittings, worn or frayed cables and frame welds. **DO NOT USE** if it appears to be inoperable or damaged.
4. Stop exercising if you feel faint or dizzy. Consult a physician if you are experiencing pain.
5. **Use this equipment only for the intended use.**
6. Keep body, clothing and hair clear from all moving parts. Do not attempt to free any jammed parts by yourself.
7. Always warm-up before and cool-down after weight training. Warm-up for 10-15 minutes with stretching and cardiovascular exercises. Cool-down should include light stretching exercises for 5-15 minutes.
8. Never hold your breath – will limit the flow of oxygen to your brain and may cause dizziness. The most often used breathing pattern is inhaling during least resistance and exhaling during maximum resistance.
9. Do not use accessories or accessory attachments that are not recommended by TFI.
10. Make sure selector pin is completely inserted. Use only the selector pin provided by the manufacturer.
11. Never pin the weights in an elevated position. Do not use the machine if found in this condition.
5. Provide an adequate safety perimeter between the machine, walls and other equipment to ensure that the facility has proper clearance for usage and training.
6. Post and disclose all safety, rules and regulations on a bulletin board easily accessible to users.
7. Perform regular maintenance (see Inspection Label). Pay special attention to areas most susceptible to wear and tear, including but not limited to cables, pulleys and rubber grips.
8. **Do not** lean against or pull on the framework, weight stack or any component at all times.
9. **Children must not** be allowed near the equipment. Teenager must be supervised.
10. Replace immediately all parts at first sign of wear or damage. If unable to replace worn or damaged components/parts, remove machine from service until the repair is made.
11. Use only genuine TuffStuff replacement parts. Failure to do so will void warranty and could result in serious injury or death to the users.
12. **Do not remove** any decals affixed to the machine. Replace if damaged.
13. **Do not alter or modify** the original manufacturer's weight stack with any add-on incremental weights, weight plates or dumbbells except those with standard factory installed option.
14. Maintain a service contract with a TFI Authorized Dealer or a Professional Service Company approved by TFI. Keep a service log of all maintenance and repair activities. **NOTICE:** It is the sole responsibility of the owner or facility operator to ensure that regular maintenance is performed.

Facility Safety Guidelines and Practices

1. Read and understand the Owner's Manual before assembling, servicing or using the equipment.
2. Equipment to be installed by TFI Authorized Dealer or Professional Service Company approved by TFI.
3. Make sure each machine is set up and operated on a solid level surface. Do not install equipment on an uneven surface.
4. **Anchoring of equipment must be completed** at time of installation and inspected prior to use. Failure to anchor the machine to the floor could cause the machine to tip or fall over due to incorrect usage and misuse, and could result in serious injury or death.



DANGER: indicates an imminently hazardous situation which, if not avoided, will result in death or serious injury.



WARNING: indicates a potentially hazardous situation which, if not avoided, will result in death or serious injury.



CAUTION: indicates a hazardous situation which, if not avoided, could result in minor or moderate injury.

Registration, Service & Assembly



Thank you for purchasing the CHL-305WS High/Low Pulley w/200 Lbs. Weight Stack for CPR-265. This machine is part of the TuffStuff line of quality strength training equipment. To maximize your use of the equipment, please study the Owner's Manual thoroughly.

Registration

To avoid unnecessary delays on warranty parts and to insure that a permanent record of your purchase is on file with our company, be sure to register online at <http://www.tuffstufffitness.com> or mail to address shown below within 10 days of purchase.

Obtaining Service

Please use this Owner's Manual as your guide to all parts included in your shipment. When ordering parts, you must specify the part number and description from this owner's manual. **Use only genuine TuffStuff replacement parts when servicing the equipment.** Failure to do so will void warranty and could result in serious injury or death.

For information about product operation or service:

Phone: 909-629-1600 Toll Free 888-884-8275
Fax: 909-629-4967
E-mail: service@tuffstuff.net or service1@tuffstuff.net
Hours: M-F 8:00 – 4:30 PST
Or write to: TuffStuff Fitness International Inc.
Customer Service
13971 Norton Avenue, Chino, CA 91710

Retain this Owner's Manual for future reference when ordering service or parts. To assist you better, please be prepared to provide the following information:

1. Model Number
2. Place of Purchase
3. Serial Number
4. Part # and Description

Required Tools

The basic tools that you will need to assemble the CHL-305WS but are not limited to:

- 9/16", 3/4", 1/2" combination wrenches
- Adjustable wrench
- Ratchet wrench with 9/16", 3/4", 1/2" sockets
- External retaining ring pliers
- Rubber mallet, measuring tape & utility knife
- Super Lube® spray lubricant and grease
- Windex or household glass cleaner

Assembly Requirements

Follow these installation requirements when assembling the CHL-305WS. Use the overhead view on the Content Page to layout your floor plan before assembling.

Set up the CHL-305WS on a clean, solid, flat surface. A smooth, flat surface under the machine helps keep it level.

Allow ample space around the machine for safe unrestricted use and easier access.

Insert all bolts in the same direction. For aesthetic appearance, insert all bolts in the same direction unless specified (in text or illustration) to do otherwise.

Leave room for adjustments. Do not fully tighten fasteners until instructed in the assembly steps to do so (to prevent any difficulty with alignment of parts during the assembly process). When not instructed, tighten fasteners such as bolts, nuts and screws so the unit is stable, but leave room for adjustments.

Assembly Tips

Read all "Notes" on each page before beginning each step.

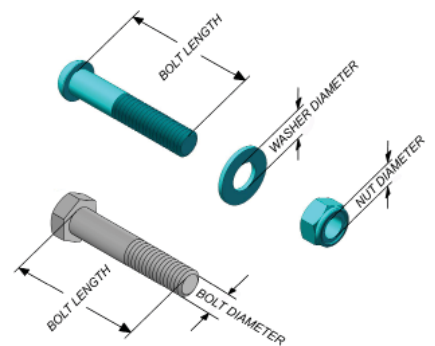
While you may be able to assemble the CHL-305WS using the illustrations only, IMPORTANT safety notes and other tips are included in the text.

Some pieces may have extra holes that you will not use. Use only those holes indicated in the instructions and illustration.

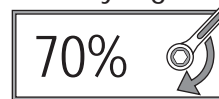
NOTE: With so many assembled parts, proper alignment and adjustment is critical. While tightening the nuts and bolts, be sure to leave room for final adjustments.

CAUTION: Obtain assistance from TFI if you have difficulty assembling the CHL-305WS. Please do not attempt to complete the assembly as this could result in equipment failure and serious injuries to the users.

Symbols & Description



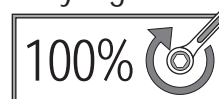
Loosely Tighten



Loosely Tighten

Loosely tighten all hardware in this step. DO NOT Fully Tighten. Some component(s) may need pre-assembly and or alignment during the assembly process.

Fully Tighten



Fully Tighten

Wrench tighten all hardware in this step.



Inspection/Maintenance

Perform regular maintenance (see Inspection Label). Pay special attention to areas most susceptible to wear and tear, including but not limited to cables, pulleys and rubber grip. TFI recommends you maintain a service contract with a TFI Authorized Dealer or a Professional Service Company approved by TFI. Keep a service log of all maintenance and repair activities. Extra copies can be downloaded from our website www.tuffstufffitness.com

INSPECTIONS

Recommended Inspection	DAILY	WEEKLY	MONTHLY	6-MONTH	YEARLY
Replace all parts at first signs of wear or damage.					
INSPECT: Links, pull-pins, snap locks, swivels, connectors, selector pin, and welded-joints.	X				
CLEAN: Upholstery with lanolin-base cleaner. Do not use Windex.	X				
INSPECT: Cables, Belts and tension (adjust if needed).	X				
INSPECT: All labels		X			
INSPECT: All nuts and bolts (tighten if needed).		X			
INSPECT: Accessory bars, handles, rubber grips.		X			
INSPECT: All anti-skid surfaces.		X			
CLEAN & LUBRICATE: Clean guide rods with Super Lube® spray lubricant and lubricate with Super Lube® (PTFE) grease.			X		
LUBRICATE: Seat sleeves, pull-pin sliding mechanism, bushings and linear bearings.			X		
CLEAN & WAX: All powder-coat finishes.				X	
REPLACE: Cables & connecting parts.					X

Use only genuine TuffStuff replacement parts. Failure to do so will void warranty and could result in serious injury or death.

TuffStuff Fitness International
Chino, CA 91710, USA
www.tuffstufffitness.com BNH3137

INSPECTION / MAINTENANCE RECORDS

DATE	REPLACEMENT	REPAIRS	INSPECTED BY

WARRANTY REPAIRS

DATE	REPLACEMENT	REPAIRS	INSPECTED BY



WARNING:

THE FOLLOWING CONDITIONS MAY INDICATE A WORN CABLE. REPLACE IMMEDIATELY.



"NECKING", STRECHED CABLE COVERING



A CRACK IN THE CABLE COVER



A TEAR IN THE CABLE COVER



A BREAK ON THE CABLE



CABLE END SLIPPING OUT

IMPORTANT NOTE:

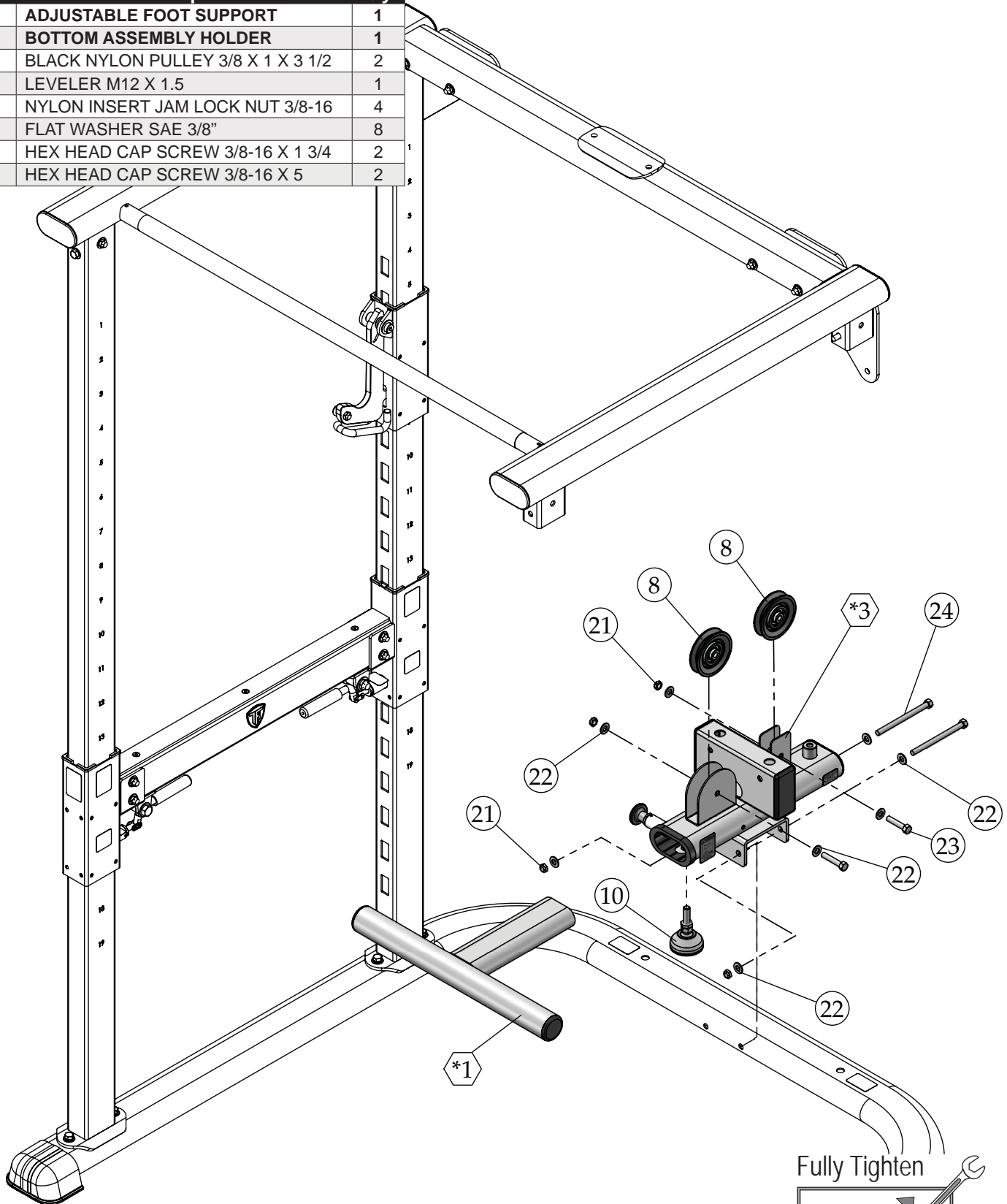
DAMAGED OR WORN CABLE (AS SHOWN ABOVE) MAY DAMAGE THE PULLEY(S). YOU MUST INSPECT THE PULLEYS AT THIS TIME FOR WEAR AND TEAR. REPLACE IF NEEDED.

Step 1



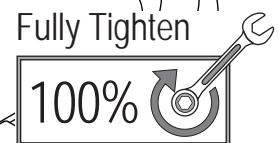
Step 1 Assembly List

Item #	Description	Qty.
*1	ADJUSTABLE FOOT SUPPORT	1
*3	BOTTOM ASSEMBLY HOLDER	1
8	BLACK NYLON PULLEY 3/8 X 1 X 3 1/2	2
10	LEVELER M12 X 1.5	1
21	NYLON INSERT JAM LOCK NUT 3/8-16	4
22	FLAT WASHER SAE 3/8"	8
23	HEX HEAD CAP SCREW 3/8-16 X 1 3/4	2
24	HEX HEAD CAP SCREW 3/8-16 X 5	2



NOTE:

1. SOME PARTS ON CPR-265 UNIT NOT SHOWN FOR CLARITY.



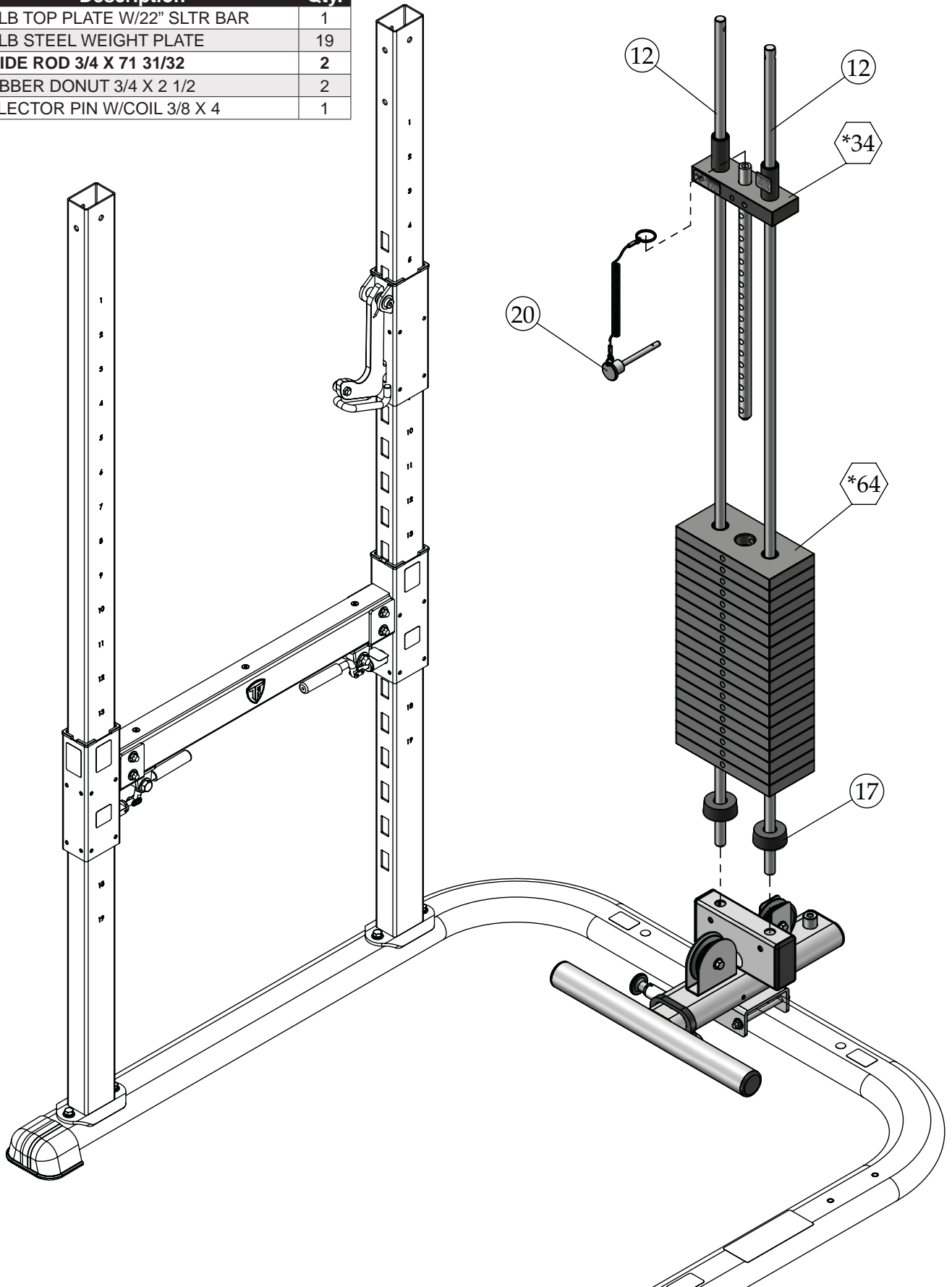
Fully Tighten
Wrench tighten all hardware in this step.

Step 2



Step 2 Assembly List

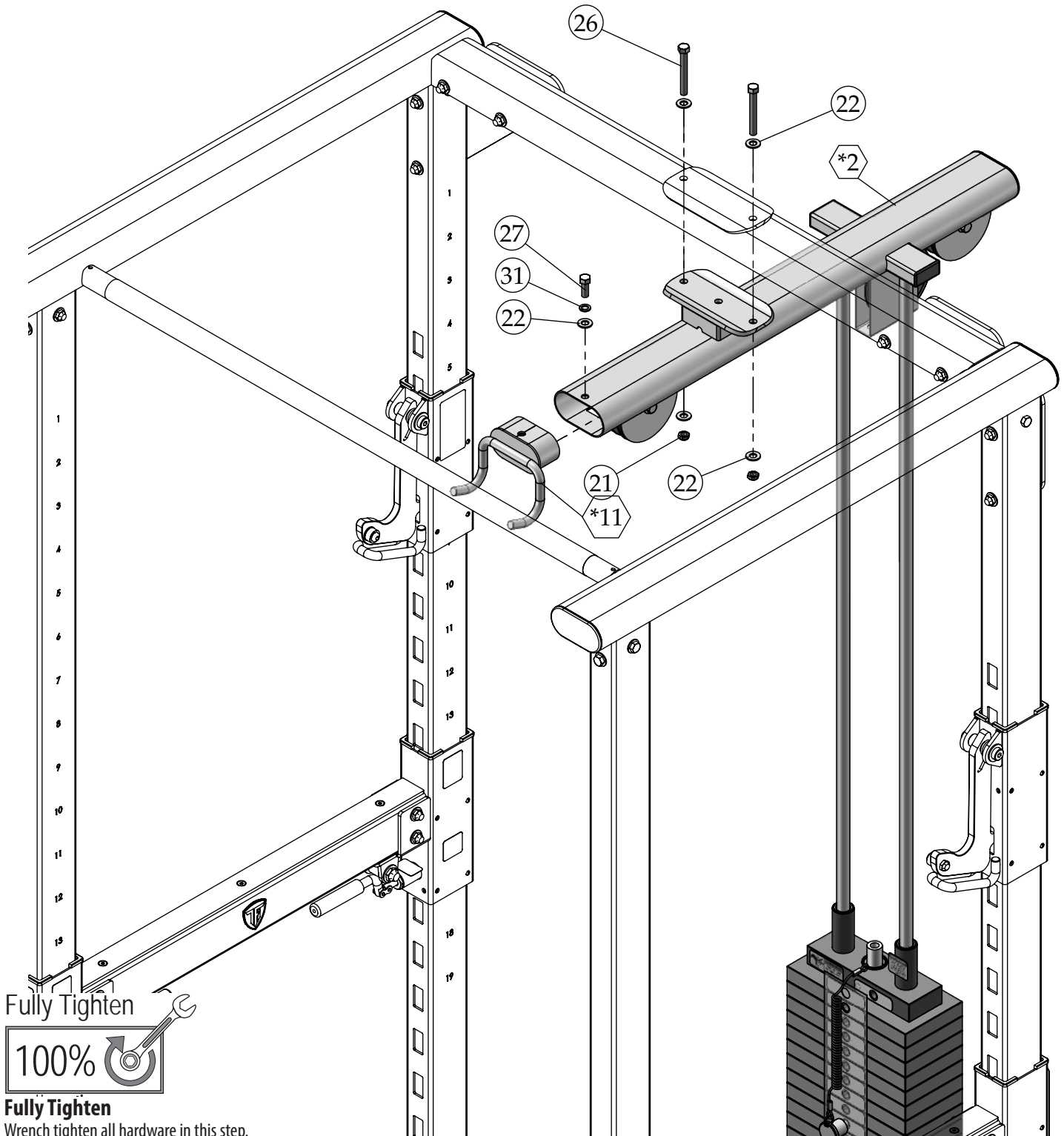
Item #	Description	Qty.
*34	10 LB TOP PLATE W/22" SLTR BAR	1
*64	10 LB STEEL WEIGHT PLATE	19
12	GUIDE ROD 3/4 X 71 31/32	2
17	RUBBER DONUT 3/4 X 2 1/2	2
20	SELECTOR PIN W/COIL 3/8 X 4	1



Step 3



Step 3 Assembly List		
Item #	Description	Qty.
*2	TOP ASSEMBLY	1
*11	LAT BAR HOLDER	1
21	NYLON INSERT JAM LOCK NUT 3/8-16	2
22	FLAT WASHER SAE 3/8"	5
26	HEX HEAD CAP SCREW 3/8-16 X 3	2
27	HEX HEAD CAP SCREW 3/8-16 X 1	1
31	SPLIT LOCK WASHER 3/8"	1



Fully Tighten
100%

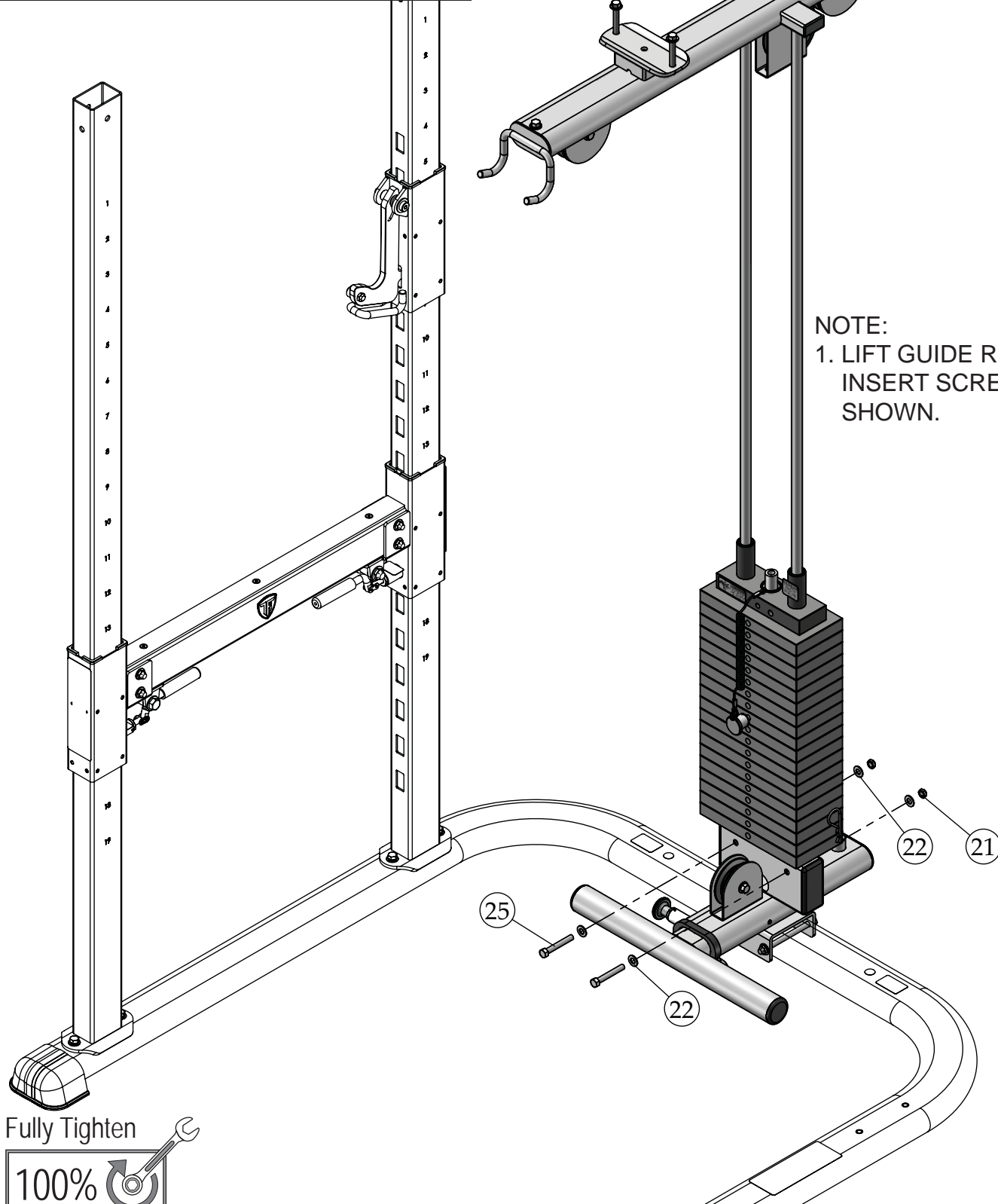
Fully Tighten
Wrench tighten all hardware in this step.

Step 4

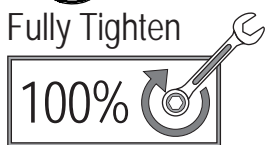


Step 4 Assembly List

Item #	Description	Qty.
21	NYLON INSERT JAM LOCK NUT 3/8-16	2
22	FLAT WASHER SAE 3/8"	4
25	HEX HEAD CAP SCREW 3/8-16 X 2 1/2	2



NOTE:
1. LIFT GUIDE RODS AND
INSERT SCREWS AS
SHOWN.



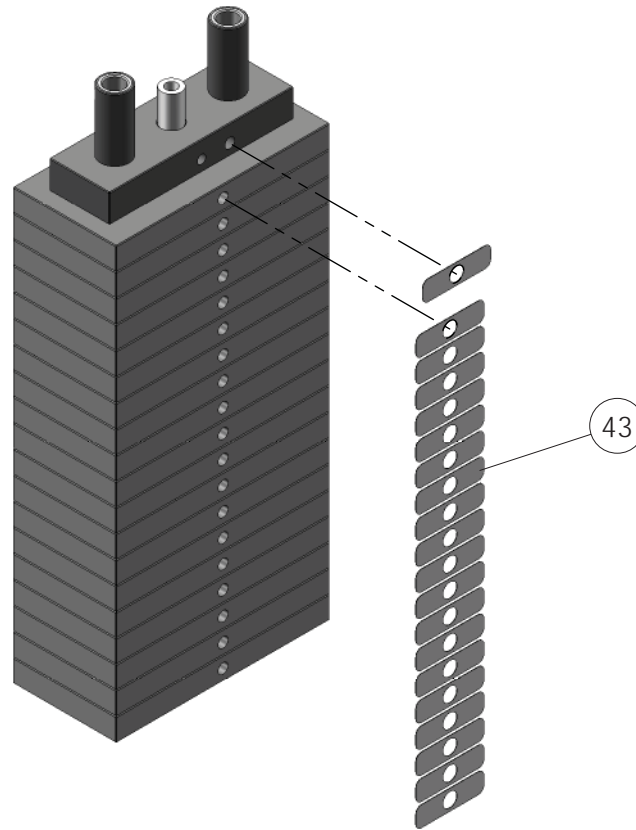
Fully Tighten
Wrench tighten all hardware in this step.

Step 5



NOTE:

1. TOP PLATE LABEL GOES ON HOLE OFF CENTER AS SHOWN. LABEL WILL COVER HOLE ON CENTER.



Weight stack label and lubrication instructions

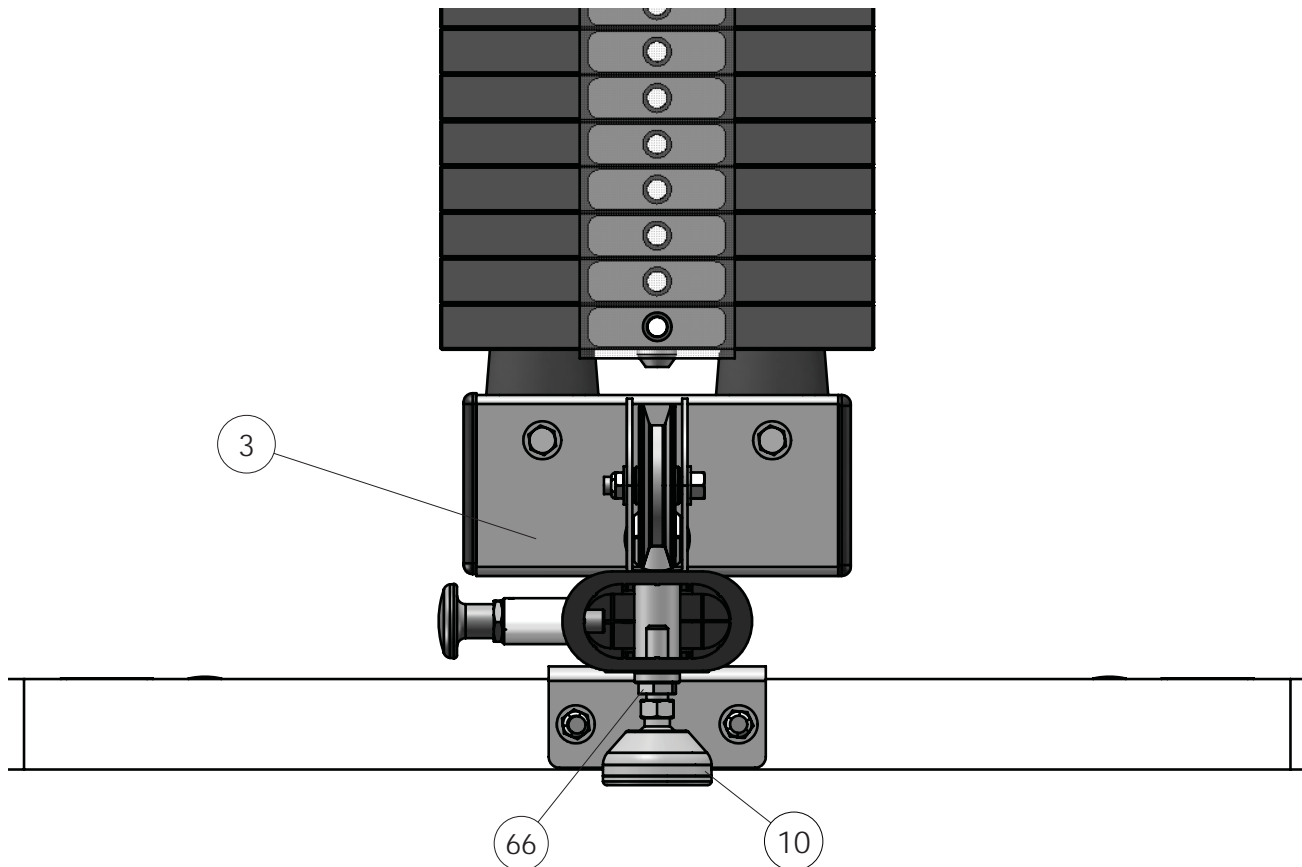
1. Wipe front surface of weight stack with rubbing alcohol and wipe dry.
2. Peel off back sheet (adhesive side) from label (#43) and make sure that the label remains attached to the application tape.
3. Line up left edge of label sheet with outside edge of weight holes.
4. Line up the first label to hole on top plate.
5. Make sure label is straight and slowly press into place.
6. Gently remove application tape and rub each label firmly against the weight stack.
7. Allow labels to stand for 2 days to allow adhesive to cure fully.
8. Open the lube package provided and apply a thin film of lubricant around the first 3 inches of the guide rods above the top plate.
9. After the cables are installed, do a set of reps to spread the lubricant thoroughly.

Step 6



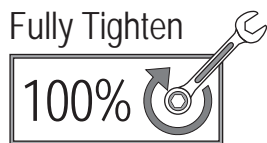
NOTE:

ONCE GUIDE RODS AND TOP ASSEMBLY ARE FULLY SECURED, MAKE ANY NECESSARY ADJUSTMENTS ON LEVELER (#10) SO IT TOUCHES THE FLOOR. THEN TIGHTEN HEX FINISH JAM NUT #66 AGAINST THE BOTTOM ASSEMBLY HOLDER (#3) TO LOCK LEVELER IN PLACE.



Step 7 Assembly List

Item #	Description	Qty.
*4	LOW ROW BAR 20"	1
*5	LAT BAR 48"	1
6	ADJ PULLEY PLATE 1/8 X 2 X 9	1
*6	ADJ PULLEY PLATE 1/8 X 2 X 9	1
8	BLK NYLON PULLEY WIDE GROOVE 3/8 X 1 X 4 1/2	5
9	BLK NYLON PULLEY WIDEGROOVE 3/8 X 1 X 3 1/2	2
13	LAT CABLE	1
14	LOW ROW CABLE	1
18	SNAP LINK Z/P 8MM X 80MM	3
19	COIL CHAIN Z/P 3/16 X 21	1
20	SELECTOR PIN W/COIL 3/8 X 4	1
21	NYLON INSERT JAM LOCK NUT Z/P 3/8-16	5
22	FLAT WASHER SAE Z/P 3/8"	10
23	HEX HEAD CAP SCREW GR-5 Z/P 3/8-16 X 1 3/4	5
28	SPLIT BOLT GR-8 Z/P 1/2-13 X 1	1
29	SPLIT LOCK WASHER Z/P 1/2"	2
34	10 LB TOP PLATE W/22" SLTR BAR 19 BLK WTS	1
56	CABLE STOPPER SHELL Ø1.5 X .75	2
57	OVAL HEAD PHILLIPS MACHINE SCREW Z/P #10-32 X 1 1/8	2
58	7/8 RD X 1 5/8 LINK (3/16 CABLE)	2
59	SPLIT HEX TAP BOLT GR-5 B/O 1/2-13 X 3 1/2	1
60	FINISHED HEX NUT B/O 1/2-13	1



Fully Tighten

Wrench tighten all hardware in this step.

Step 7 Cable Routing



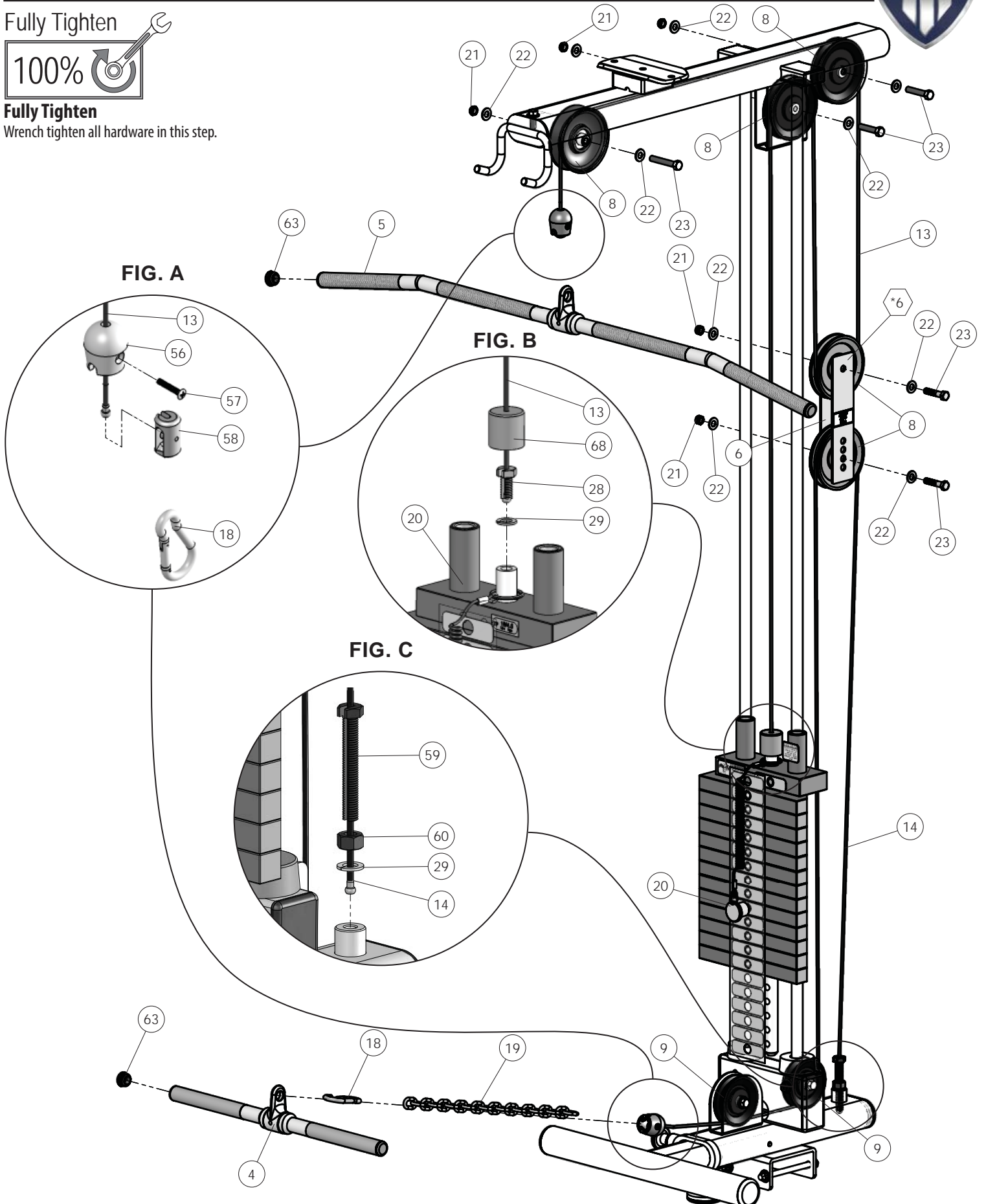
Fully Tighten

100%



Fully Tighten

Wrench tighten all hardware in this step.

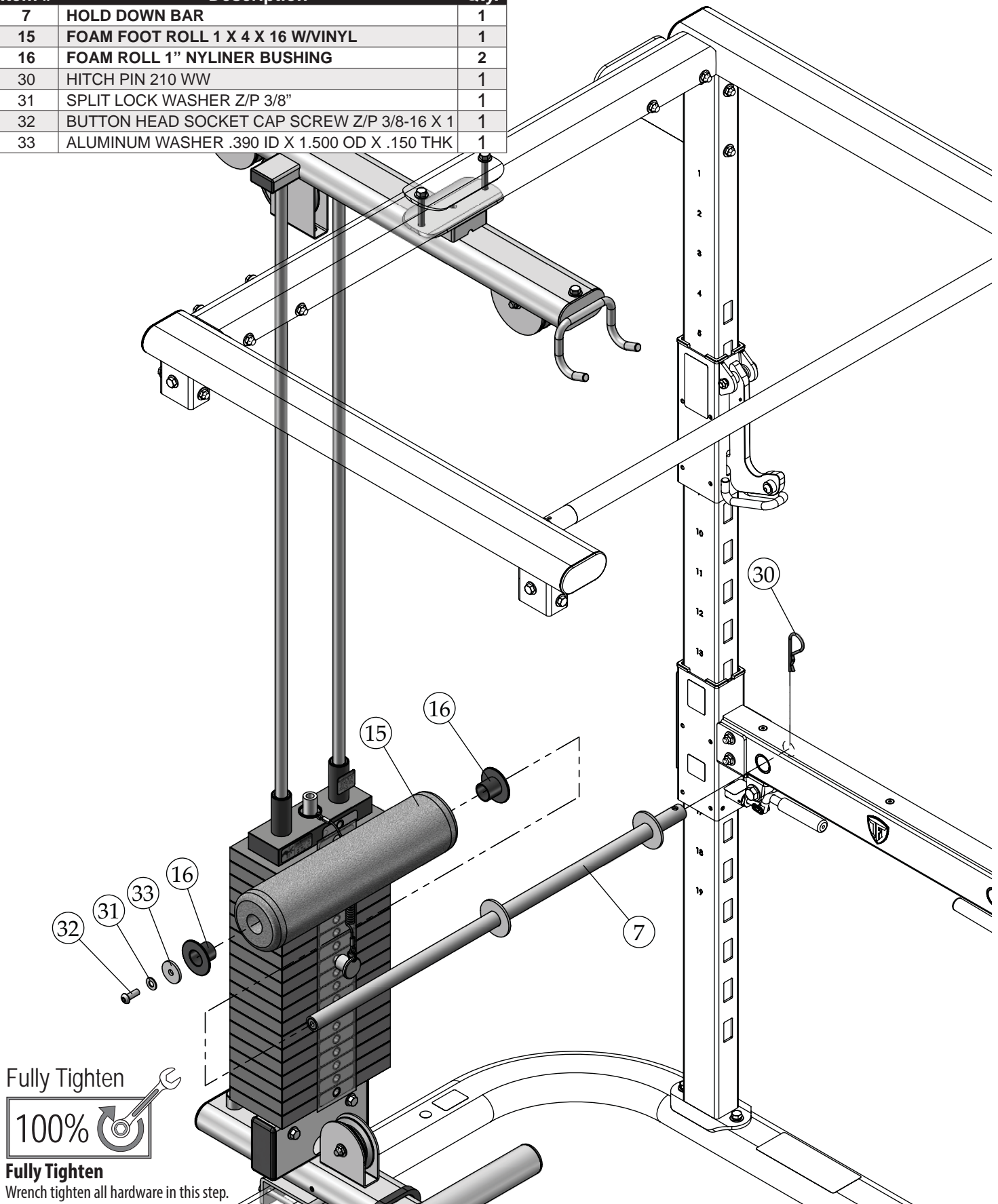


Step 8



Step 8 Assembly List

Item #	Description	Qty.
7	HOLD DOWN BAR	1
15	FOAM FOOT ROLL 1 X 4 X 16 W/VINYL	1
16	FOAM ROLL 1" NYLINER BUSHING	2
30	HITCH PIN 210 WW	1
31	SPLIT LOCK WASHER Z/P 3/8"	1
32	BUTTON HEAD SOCKET CAP SCREW Z/P 3/8-16 X 1	1
33	ALUMINUM WASHER .390 ID X 1.500 OD X .150 THK	1



Parts List



COLOR CHART
 GRAY= SUB-ASSEMBLY PARTS
 BLACK= HARDWARE

CHL-305WS REV1

CHL-305WS

Parts List

Item No.	Description	Rev.	Part No.	Qty.	Item No.	Description	Part No.	Qty.
1	ADJUSTABLE FOOT SUPPORT	0	UP8298	1	35	LABEL-CAUTION CHECK PULL-PIN IS FULLY... 1 1/2 X 1 3/8	BNH2912	1
2	TOP ASSEMBLY	0	UP8306	1	36	LABEL-DANGER CHECK RETAINING NUT... 1.5 X 1	BNH3146	1
3	BOTTOM ASSEMBLY HOLDER	0	UP8300	1	37	LABEL-IMPORTANT FOR SMOOTH PERFORMANCE...	BNH2916	1
4	LOW ROW BAR 20"		BNH0294	1	38	LABEL-TFI SERIAL NO. 2.5 X 1.5	BNH3147	1
5	LAT BAR 48"		BNH0295	1	39	LABEL-CAUTION ADJUST LEVELER TO FLOOR SURFACE	BNH3119	1
6	ADJ PULLEY PLATE 1/8 X 2 X 9	0	UP8299	2	40	LABEL-DANGER USE THIS EQUIPMENT ONLY...	BNH2903	1
7	HOLD DOWN BAR		UP8307	1	41	LABEL-IMPORTANT ADJUST CABLE TENSION HERE	BNH2924	2
8	BLK NYLON PULLEY WIDEGROOVE 3/8 X 1 X 4 1/2		BNH2834	5	42	LABEL-IMPORTANT FOR SMOOTH PERFORMANCE...	BNH2925	1
9	BLK NYLON PULLEY WIDEGROOVE 3/8 X 1 X 3 1/2		BNH2832	2	43	LABEL-NUMBERS 10-200 LBS/KGS 7/8 X 3 YELLOW & BLACK	BNH4069	1
10	LEVELER M12 X 1.5		BNH3230	1	44	LABEL-WARNING DO NOT USE FOR CHINNING...	BNH2923	1
11	LAT BAR HOLDER	1	UP8305	1	45	LABEL-WARNING KEEP BODY, HANDS...	BNH2926	1
12	GUIDE ROD 3/4 X 71 31/32	0	UP8304	2	46	FACILITY SIGN BE ALERT! THE FITNESS EQUIPMENT...	BNH3138	1
13	LAT CABLE	0	UP8301	1	47	NYLON BUSHING 25/32 ID X 1 1/16 OD X 29/32	BNH0532	42
14	LOW ROW CABLE	0	UP8302	1	48	ROLL PIN B/O 5/16 X 2	BNH0668	1
15	FOAM FOOT ROLL 1 X 4 X 16 W/VINYL	0	UP8303	1	49	LEVELER M12 X 1.5	BNH3230	1
16	FOAM ROLL 1" NYLINER BUSHING		BNH2025	2	50	PLASTIC INSERT CAP 1" X 2" 10-14 GA	BNH0005	2
17	RUBBER DONUT 3/4 X 2 1/2		BNH0068	2	51	PLASTIC INSERT CAP 2 X 3 11-14 GA	BNH0052	2
18	SNAP LINK Z/P 8MM X 80MM		BNH0065	3	52	PLASTIC INSERT CAP ELLIPTICAL 2 X 4 (50MM X 100MM)	BNH1794	2
19	COIL CHAIN Z/P 3/16 X 21		BNH1262	1	53	PLASTIC INSERT ELLIPTICAL GUIDE (2X4)	BNH1760	1
20	SELECTOR PIN W/COIL 3/8 X 4	0	UP3035	1	54	PULL PIN 1/2 X 2 7/8 LIGHT SPRING (YELLOW KNOB)	BNH0641	1
21	NYLON INSERT JAM LOCK NUT Z/P 3/8-16		BNH2026	13	55	SOCKET SET SCREW Z/P 10-32 X 1/8	BNH2088	1
22	FLAT WASHER SAE Z/P 3/8"		BNH2030	28	56	CABLE STOPPER SHELL 1 1/2 X 1 3/4	BNH4230	2
23	HEX HEAD CAP SCREW GR-5 Z/P 3/8-16 X 1 3/4		BNH2040	7	57	OVAL HEAD PHILLIPS MACHINE SCREW Z/P #10-32 X 1 1/8	BNH2793	2
24	HEX HEAD CAP SCREW GR-5 Z/P 3/8-16 X 5		BNH2051	2	58	7/8 RD X 1 5/8 LINK (3/16 CABLE)	BNH4232	2
25	HEX HEAD CAP SCREW GR-5 Z/P 3/8-16 X 2 1/2		BNH2044	2	59	SPLIT HEX TAP BOLT GR-5 B/O 1/2-13 X 3 1/2	BNH1131	1
26	HEX HEAD CAP SCREW GR-5 Z/P 3/8-16 X 3		BNH2046	2	60	FINISHED HEX NUT B/O 1/2-13	BNH0201	1
27	HEX HEAD CAP SCREW GR-5 Z/P 3/8-16 X 1		BNH2037	1	61	YELLOW GRIP 1/2 X 4 7/8	BNH1514	2
28	SPLIT BOLT GR-8 Z/P 1/2-13 X 1		BNH0479	1	62	HEX KEY ALLOY 3/32"	BNH0372	1
29	SPLIT LOCK WASHER Z/P 1/2"		BNH0572	2	63	PLASTIC INSERT CAP 1" RD 10-12 GA	BNH3271	4
30	HITCH PIN 210 WW		BNH0568	1	64	10 LB STEEL WEIGHT PLATE BLACK 4 9/16 X 9 7/16 ASSY	BNH1650	19
31	SPLIT LOCK WASHER Z/P 3/8"		BNH2032	2	65	PLASTIC INSERT CAP 2" RD 10-14 GA	BNH0004	2
32	BUTTON HEAD SOCKET CAP SCREW Z/P 3/8-16 X 1		BNH2033	1	66	HEX FINISH JAM NUT M12 X 1.5	BNH3231	1
33	ALUMINUM WASHER .390 ID X 1.500 OD X .150 THK		BNH1541	1	67	SUPER LUBE TEFLON LUBRICANT 82340	BNH0704	1
34	10 LB TOP PLATE W/22" SLTR BAR 19 BLK WTS ASSY		BNH2020	1	68	TOP PLATE BUMPER	BNH3308	1

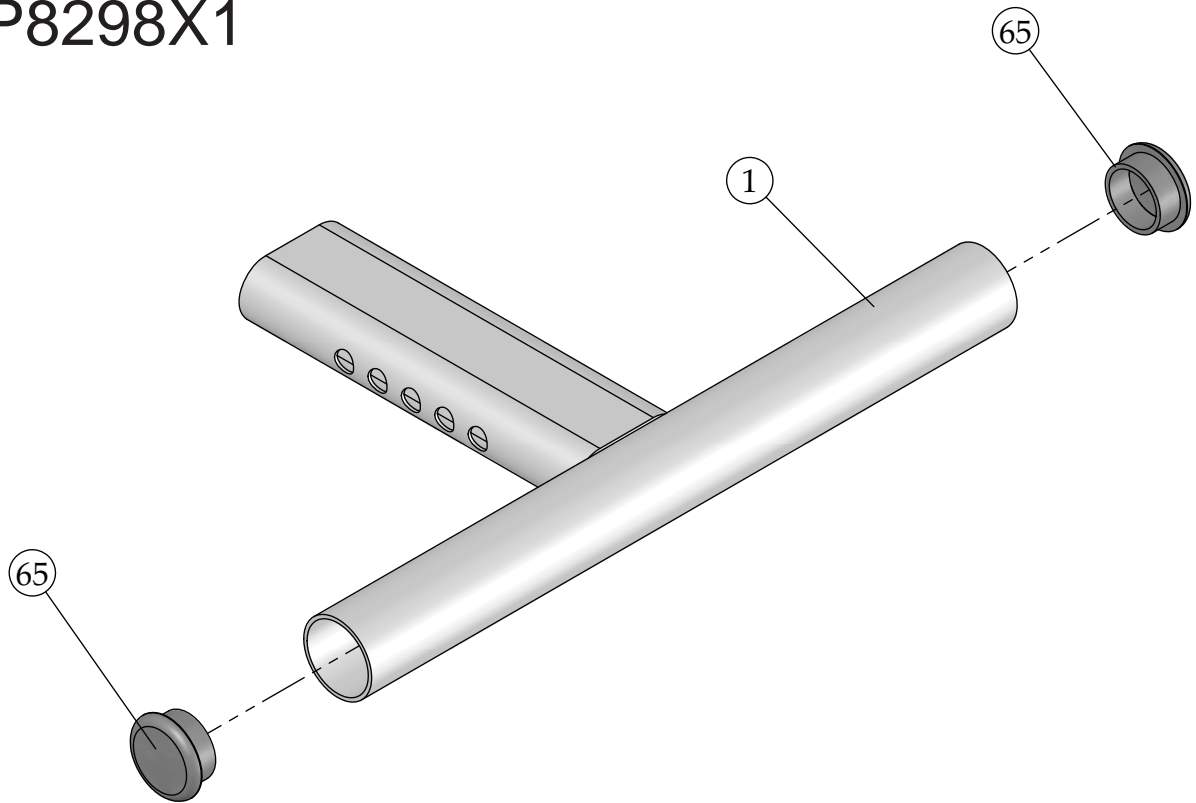
Pre-Assembled Components

Item No.	Description	Rev.	Part No.	Qty.	Item No.	Description	Rev.	Part No.	Qty.
*1	ADJUSTABLE FOOT SUPPORT	0	UP8298X1	1	*11	LAT BAR HOLDER	1	UP8305X1	1
*2	TOP ASSEMBLY	0	UP8306X1	1	*13	LAT CABLE	0	UP8301X1	1
*3	BOTTOM ASSEMBLY HOLDER	0	UP8300X1	1	*14	LOW ROW CABLE	0	UP8302X1	1
*4	LOW ROW BAR 20"		BNH0294	1	*34	10 LB TOP PLATE W/22" SLTR BAR 19 BLK WTS ASSY		BNH2020	1
*5	LAT BAR 48"		BNH0295	1	*64	10 LB STEEL WEIGHT PLATE BLACK 4 9/16 X 9 7/16 ASSY		BNH1650	19
*6	ADJ PULLEY PLATE 1/8 X 2 X 9	0	UP8299X1	2					

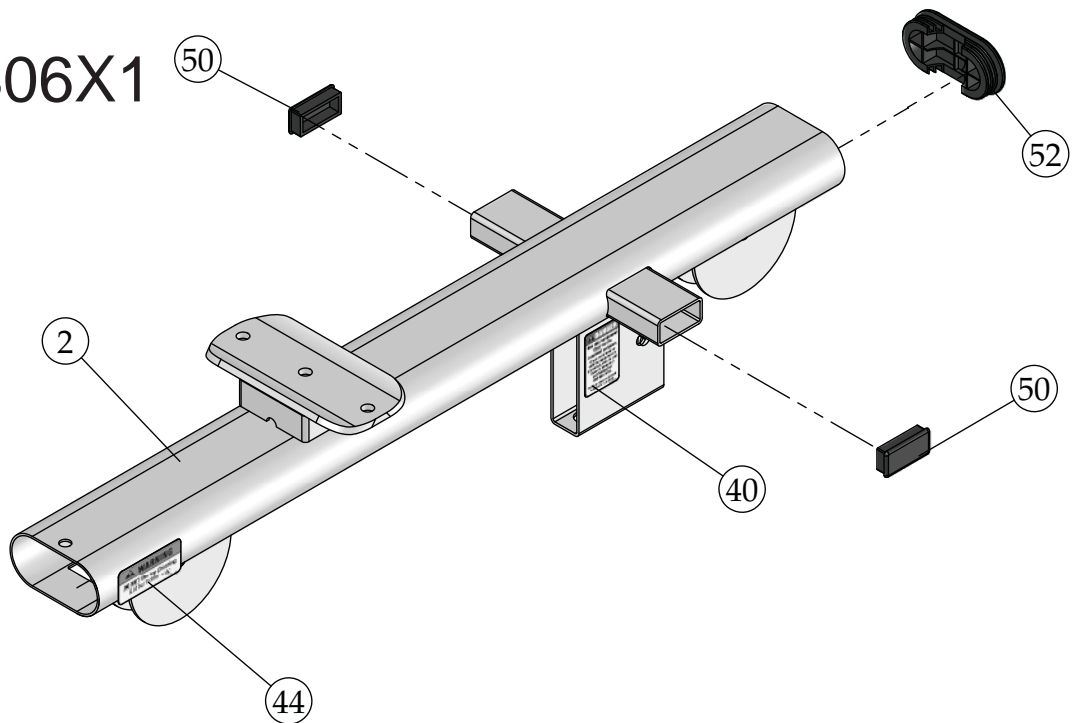
Pre-Assembled Components



*1 UP8298X1



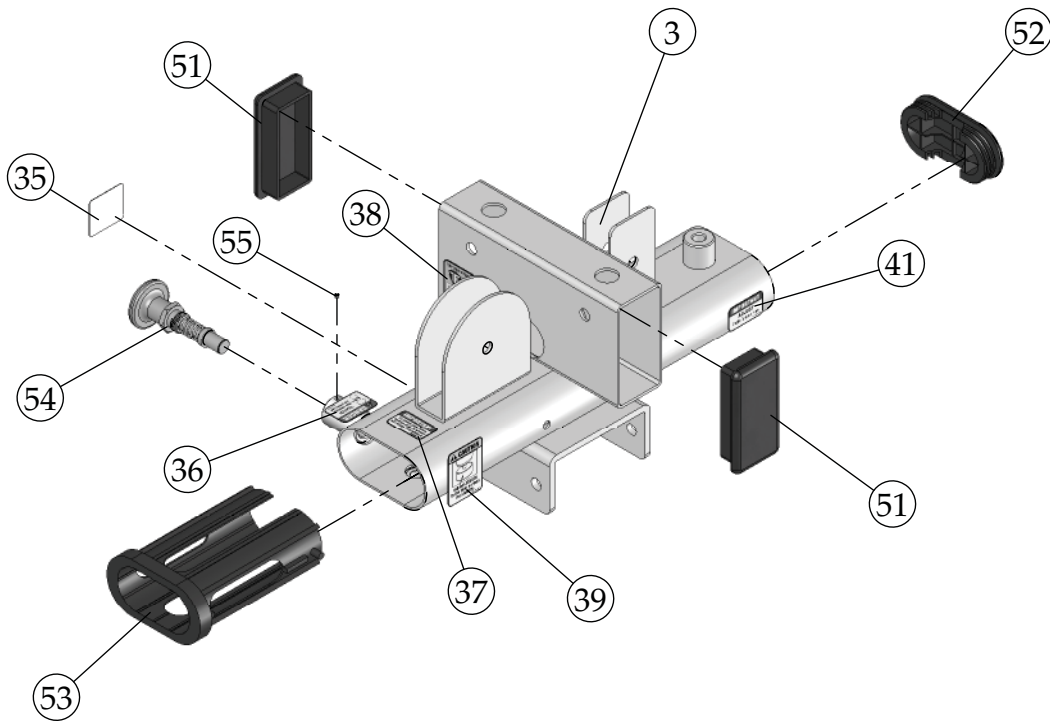
*2 UP8306X1



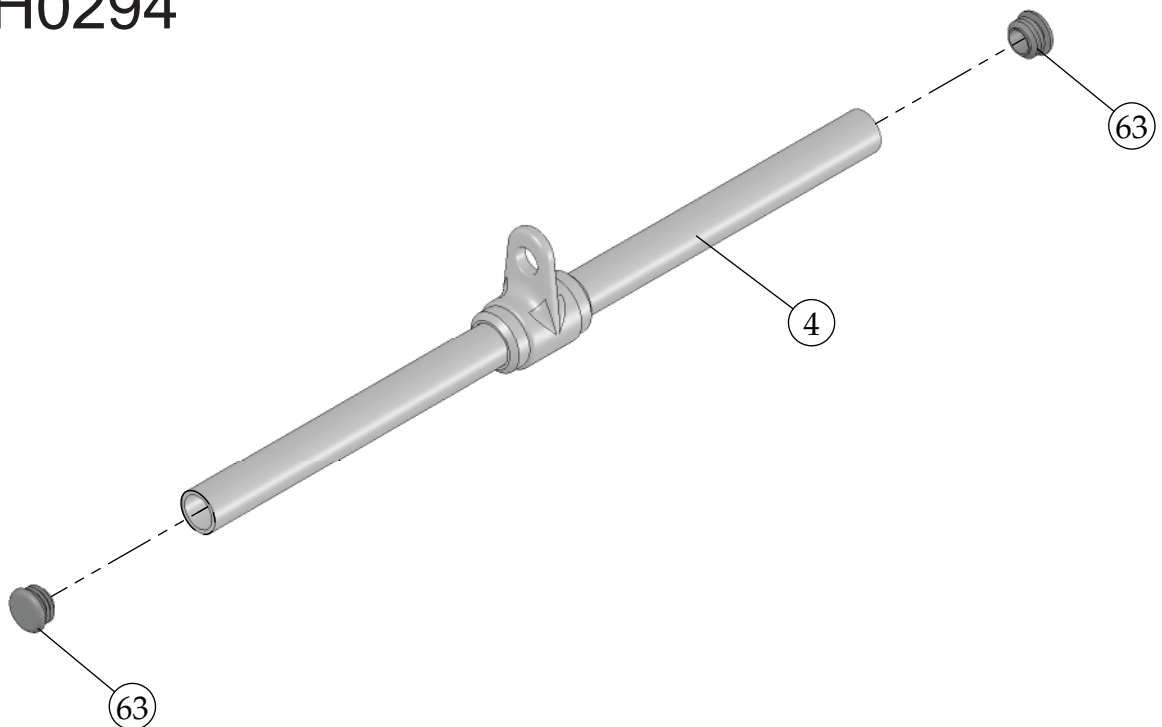
Pre-Assembled Components



*3 UP8300X1



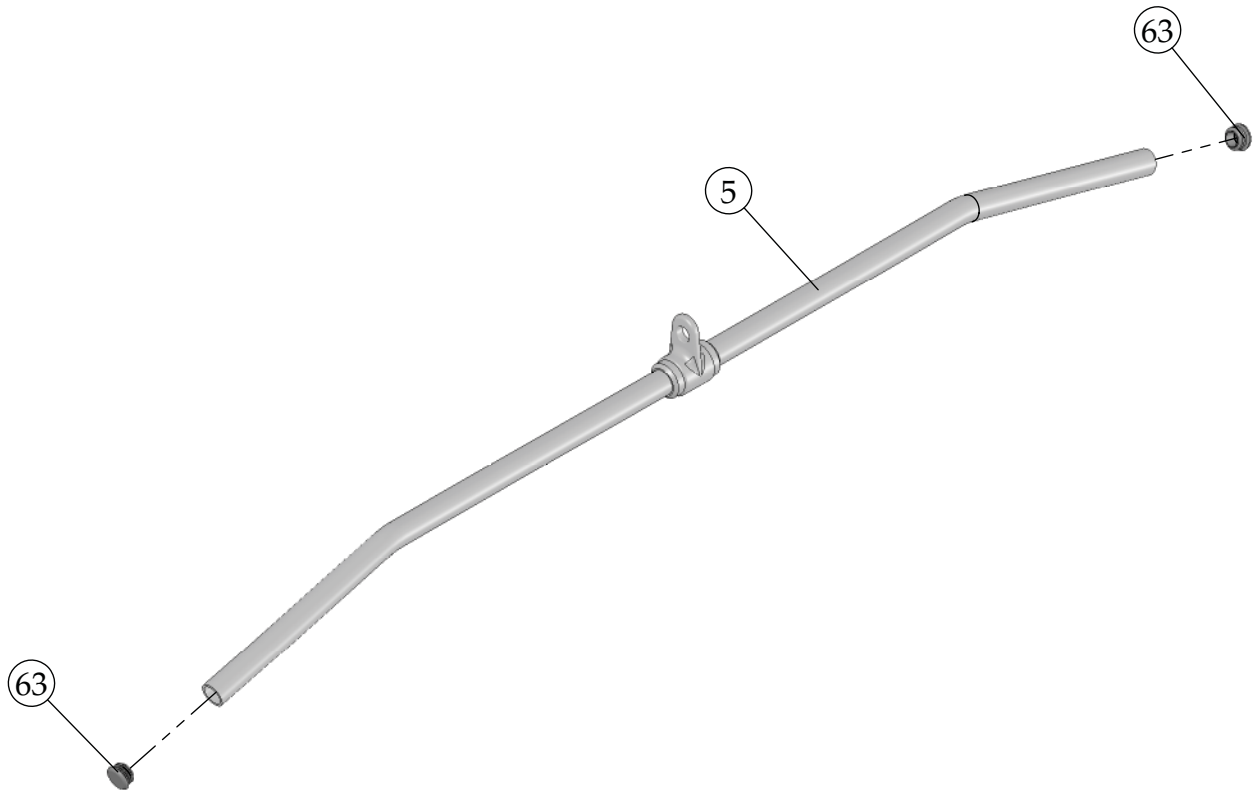
*4 BNH0294



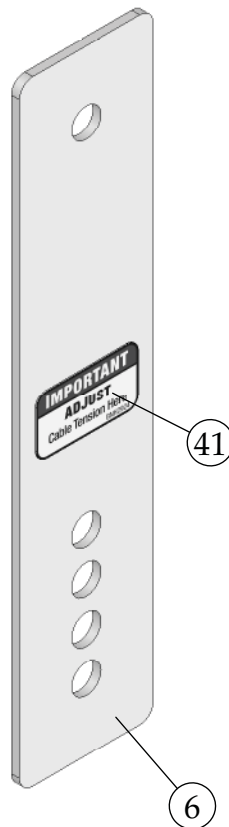
Pre-Assembled Components



*5 BNH0295



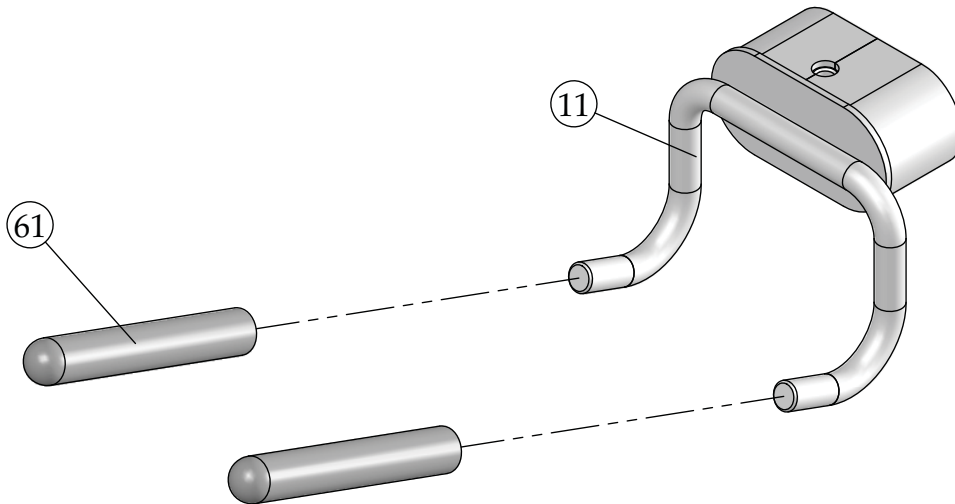
*6 UP8299X1



Pre-Assembled Components

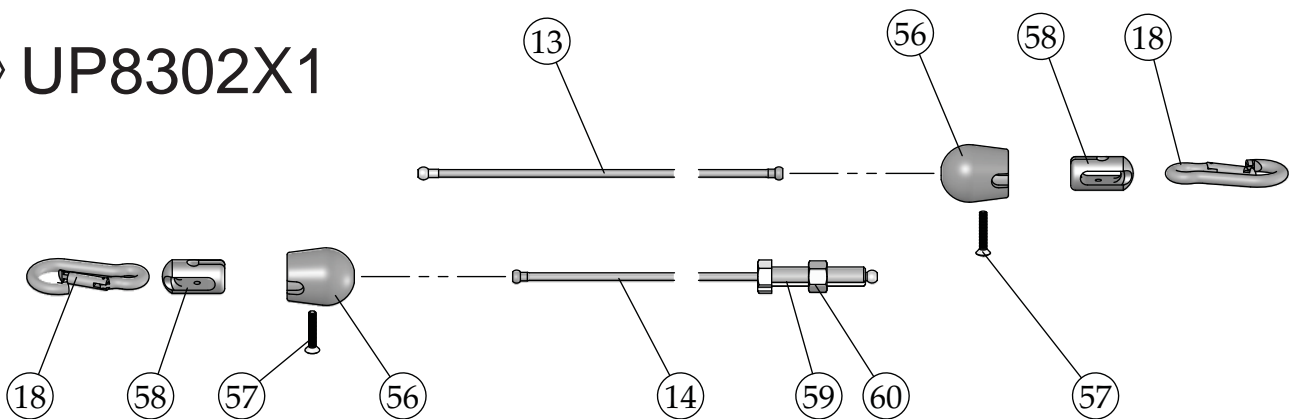


*11 UP8305X1



*13 UP8301X1

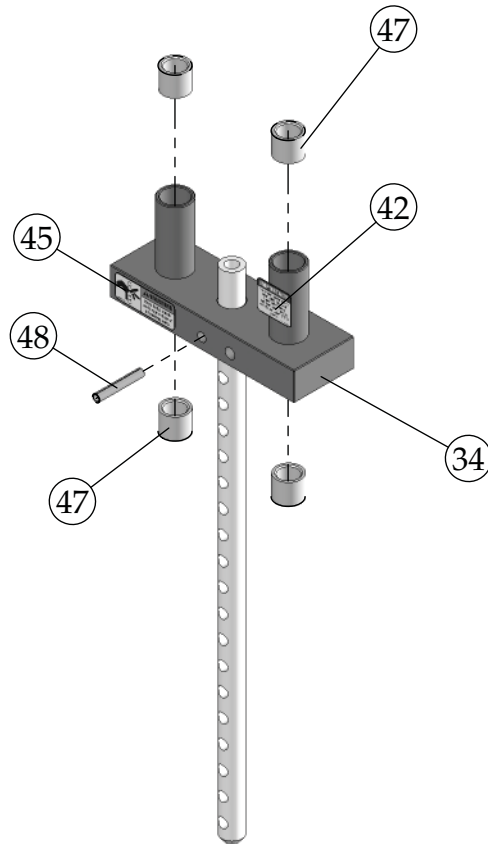
*14 UP8302X1



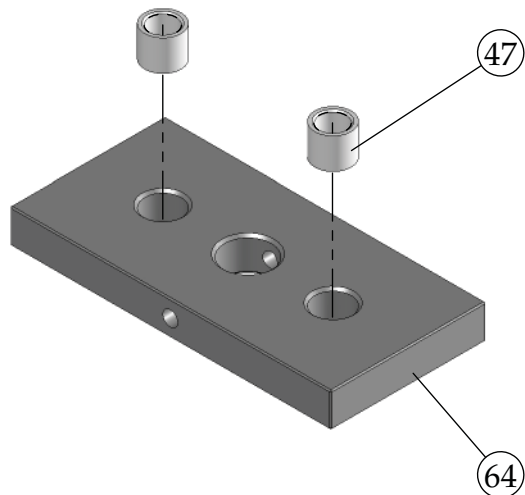
Pre-Assembled Components



*34 BNH2020



*64 BNH1650



Notes



Lined area for taking notes, consisting of multiple horizontal lines.



LIGHT COMMERCIAL WARRANTY

This warranty applies only in the United States to the products manufactured or distributed by TuffStuff Fitness International (TFI) under the TuffStuff brand name. TFI warrants to the original purchaser that TuffStuff equipment will be free from defects in material and workmanship. All warranty periods begin to run from the date of purchase to the original purchaser. The warranty and remedies set forth herein are conditioned upon proper storage, installation, use and maintenance and conformance with any recommendations of TFI. This warranty does not cover products not manufactured by TFI or products which are altered without the express written consent of TFI.

LIGHT COMMERCIAL WARRANTY:

- TEN (10) Years:** Structural main frames, welds, cams and weight plates.
- FIVE (5) Years:** Pivot bearings, pulleys, bushings, guide rods and gas shocks.
- ONE (1) Year:** Belts, linear bearings and pull-pin components.

All other parts not mentioned elsewhere in the warranty will expire one (1) year from the date of purchase to the original purchaser.

- SIX (6) Months:** Upholstery, cables, finish and rubber grips.

HOME LIFETIME WARRANTY:

LIFETIME of the equipment while owned by the original purchaser (applies only to defects from manufacturer only).

This warranty does not cover:

1. TuffStuff products sold for and used in a commercial or institutional environment.
2. Any damage, failure or loss caused by accident, misuse, neglect, abuse, improper assembly, improper maintenance, or failure to follow instructions or warnings in the owner's manual and warning labels posted on the machines.
3. Use of the product in a manner for which it was not designed.
4. Original product that is altered, or the use of replacement parts and components of another manufacturer other than TuffStuff.

Light Commercial Use:

Light Commercial Warranty applies to facilities like hotels, apartment complexes, personal training studios, fire & police stations, etc. where the equipment would be used by no more than 30 people per day.

The obligation of TFI under this warranty is limited to repairing or replacing warranted defective parts as TFI may elect, at TFI's facility in Chino, California, without charge to the purchaser. Purchaser is responsible for installation of repaired or replaced parts, and all transportation and insurance costs on returned or replaced equipment to and from TFI's facility in Chino.

THE FOREGOING SHALL CONSTITUTE THE SOLE REMEDY OF THE PURCHASER AND THE SOLE LIABILITY OF TFI WITH REGARD TO WARRANTY. NO IMPLIED STATUTORY WARRANTY OR IMPLIED STATUTORY WARRANTY OF MERCHANTABILITY OR FITNESS FOR A PARTICULAR PURPOSE SHALL APPLY. IN NO EVENT, WHETHER AS A RESULT OF BREACH OF CONTRACT, WARRANTY, NEGLIGENCE OR OTHERWISE, SHALL TFI BE LIABLE FOR SPECIAL, INCIDENTAL OR CONSEQUENTIAL DAMAGES INCLUDING, BUT NOT LIMITED TO, LOSS OF PROFITS OR REVENUE, LOSS OF USE OF EQUIPMENT, COST OF CAPITAL, COST OF SUBSTITUTION EQUIPMENT, DOWNTIME COST, OR CLAIMS OF CUSTOMERS OR PURCHASER FROM SUCH DAMAGE.

This written warranty is the final, complete and exclusive agreement of the parties with respect to the quality or performance of the equipment and no action for breach of this written warranty or any implied warranty shall be commenced more than one (1) year after the accrual of the cause of action. No modification of this warranty or waiver of its terms shall be binding on either party unless approved in writing by an authorized representative of the party. Contact TuffStuff Fitness International at 13971 Norton Avenue, Chino, CA 91710, before returning any defective equipment.

This warranty gives you specific legal rights and you may also have other rights, which may vary from state to state.

SERIAL #

Write your Serial number here for future reference

Purchase Date



TuffStuff Fitness International, Inc.

13971 Norton Avenue, Chino, CA 91710, USA Phone: 909-629-1600 Fax: 909-629-4967
www.tuffstufffitness.com service@tuffstuff.net or service1@tuffstuff.net